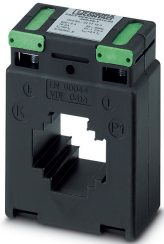


Current transformer - PACT MCR-V2-3015- 60- 600-5A-1 - 2277103


Please be informed that the data shown in this PDF Document is generated from our Online Catalog. Please find the complete data in the user's documentation. Our General Terms of Use for Downloads are valid (<http://phoenixcontact.com/download>)



Window-type current transformer, 600 A AC primary current; 5 A AC secondary current; accuracy class 1; 10 VA rated power

RoHS

Key Commercial Data

Packing unit	1 pc
GTIN	 4 046356 305303
GTIN	4046356305303
Weight per Piece (excluding packing)	265.400 g
Custom tariff number	85043129
Country of origin	Germany

Technical data

Dimensions

Width	30 mm
	60 mm (with alternative mounting)
Height	80 mm
	80 mm (with alternative mounting)
Depth	60 mm
	30 mm (with alternative mounting)
Diameter	28 mm (Primary circular conductor)

Ambient conditions

Ambient temperature (operation)	-25 °C ... 40 °C
Ambient temperature (storage/transport)	-25 °C ... 40 °C

Current transformer - PACT MCR-V2-3015- 60- 600-5A-1 - 2277103

Technical data

Ambient conditions

Maximum altitude	≤ 1000 m
Permissible humidity (operation)	Use only indoors, non-condensing

General

Converter type	Plug-on converters
Accuracy class	1
Can be calibrated	no
Color	black
Housing material	PA 6.6

Input data

Thermal rated short-time current	$I_{th} = 60 * I_n$
Thermal rated continuous current	$I_d = 1.2 * I_n$
Rated surge current	$I_{dyn} = 2.5 * I_{th}$
Rated frequency: Standard converter	50 Hz ... 60 Hz
Surge current limitation factor	FS 5
Rated power	10 VA
Primary rated current I_{pn}	0 A ... 600 A
Secondary rated current I_{sn}	5 A AC

Connection data

Connection method	Screw connection
Conductor cross section flexible	2x 2.5 mm ² ... 4 mm ² (Secondary terminals)

Standards and Regulations

Standards/regulations	EN 61869
Rated insulation voltage	1 kV (Phase/neutral conductor)
UL, USA/Canada	XODW8.E323953

Conformance/approvals

Designation	UL, USA/Canada
Identification	XODW8.E323953

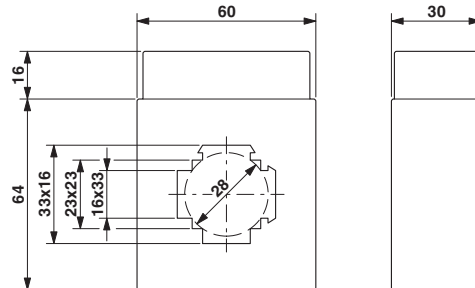
Environmental Product Compliance

China RoHS	Environmentally Friendly Use Period = 50 years
	For details about hazardous substances go to tab "Downloads", Category "Manufacturer's declaration"

Drawings

Current transformer - PACT MCR-V2-3015- 60- 600-5A-1 - 2277103

Dimensional drawing



Classifications

eCl@ss

eCl@ss 10.0.1	27210902
eCl@ss 11.0	27210902
eCl@ss 4.0	27210900
eCl@ss 4.1	27210900
eCl@ss 5.0	27210900
eCl@ss 5.1	27210900
eCl@ss 6.0	27210900
eCl@ss 7.0	27210902
eCl@ss 9.0	27210902

ETIM

ETIM 3.0	EC002048
ETIM 4.0	EC002048
ETIM 6.0	EC002048
ETIM 7.0	EC002048

UNSPSC

UNSPSC 6.01	30211501
UNSPSC 7.0901	39121019
UNSPSC 11	39121006
UNSPSC 12.01	39121006
UNSPSC 13.2	39121032
UNSPSC 18.0	39121032
UNSPSC 19.0	39121032
UNSPSC 20.0	39121032
UNSPSC 21.0	39121032

Current transformer - PACT MCR-V2-3015- 60- 600-5A-1 - 2277103

Approvals

Approvals

Approvals

EAC / EAC

Ex Approvals

Approval details

EAC		RU*DE*08.B.01187/19
-----	--	---------------------

EAC		RU*DE*08.B.01187/19
-----	--	---------------------

Accessories

Accessories

Mounting material

Mounting material - PACT-FAST-MNT-W16-L65 - 2276641



The transformer quick-action mechanism enables the lightning-fast mounting of PACT current transformers on the power rail. The installation can be completed easily by hand without the use of tools. Fixing pins: 65 mm, holding latches: 16 mm

Mounting material - PACT-FAST-MNT-W16-L40 - 2276638



The transformer quick-action mechanism enables the lightning-fast mounting of PACT current transformers on the power rail. The installation can be completed easily by hand without the use of tools. Fixing pins: 40 mm, holding latches: 16 mm

